

MAXIM[®]

kitchenpro

USER MANUAL

Electric Knife

Model Number: MEK120



READ AND SAVE THESE INSTRUCTIONS

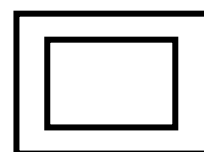
IMPORTANT SAFEGUARDS

When using any electrically powered product, basic safety precautions should always be followed, including the following:

PLEASE READ ALL INSTRUCTIONS CAREFULLY BEFORE USING THIS PRODUCT

WARNING! - to reduce the risk of fire, electrical shock or injury to persons or property:

- Carefully read all instructions before operation and save them for future reference.
- Remove and safely discard any packaging material before using the appliance for the first time.
- To eliminate a choking hazard for young children, remove and discard the protective cover that is fitted to the power plug of the appliance.
- Always operate the product from a power source of the same voltage, frequency and rating as indicated on the product identification plate.
- This appliance is not intended for use by persons (including children) with reduced physical, sensory or mental capabilities, or lack of experience or knowledge, unless they have been given supervision or instruction concerning use of the appliance by a person responsible for their safety.
- This appliance shall not be used by children. Keep the appliance and its cord out of reach away from children. Children shall not play with the appliance.
- Always disconnect the appliance from the supply if it is left unattended and before assembling, disassembling or cleaning.
- Do not operate this product with a damaged cord or plug, or after the product malfunctions, or appears damaged in any way. Return appliance to the nearest authorized service center for examination, repair, adjustment or any other servicing.
- When inserting or removing the blades, make sure the unit is NOT switched on at the power point. Remove the power cord from the power source.
- To protect the life of the motor, use the knife for periods of 5 minutes with a cooling period of 2 minutes in between. Never use your electric knife for more than 15 minutes without a break.
- This appliance is intended to be used in household and similar applications such as:
 - staff kitchen areas in shops, offices and other working environments;
 - farm houses;
 - by clients in hotels, motels and other residential type environments;
 - bed and breakfast type environments.
- For protection against electric shock, do not immerse the cord, plug or any parts of the body of the knife in water or any other liquids.
- Do not let the cord hang over the edge of table or counter, or touch hot surfaces.
- The use of other accessory attachments not recommended by the appliance manufacturer may cause hazard or injury. Do not use any accessories other than the ones provided with this product.
- Always pull the plug out from the wall, never pull the cord. Remove the plug from the wall before moving the appliance. Use both hands to move the appliance.
- DO NOT place the appliance on, or near a hot gas or electric burner, or in a heated unit.
- Unplug from the power outlet when not in use and before cleaning. Allow to cool completely before putting on or removing parts, and before cleaning.
- Do not use outdoors. Indoor use only.
- Do not use the appliance other than for its intended purpose.



READ AND SAVE THESE INSTRUCTIONS FOR FUTURE REFERENCES

BEFORE FIRST USE

Read and follow the instructions in this user manual even if you feel you are familiar with the product, and find a place to keep it handy for future reference.

For your convenience record the complete model number (located on the product identification plate) and the date you received the product, together with your purchase receipt and attach to the warranty and service information. Retain in the event that warranty service is required.

NOTE: The rating of this product (as marked on the product identification plate) is based on specific loading tests. Normal use or the use of other recommended attachments may draw significantly less power.

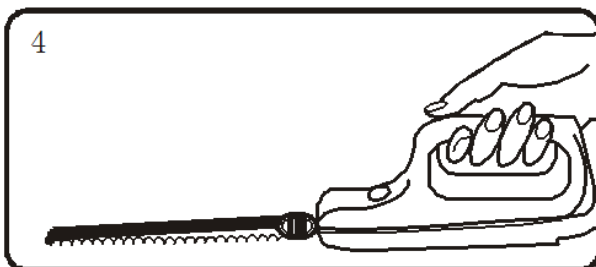
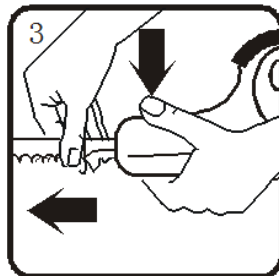
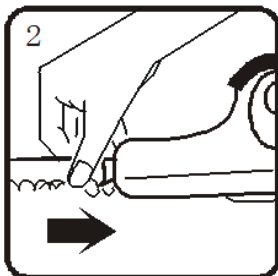
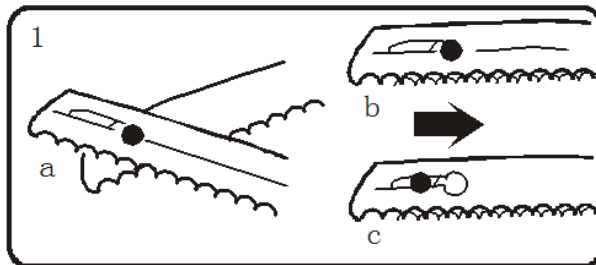
USING YOUR ELECTRIC KNIFE

WARNING:

- As this can be a dangerous appliance, please handle the blades with caution.
- Depress the button at the tip of the knife and insert the blades into the slot provided. Make sure the blades are firmly embedded.
- Your knife is now ready for use. Make sure your hand stays away from the blade.
- The knife should be suitable for cutting vegetables, meat (thawed), and bread. **DO NOT USE** to cut frozen meat or bones.

Fitting the Blades:

When fitting the knife blades, your device must not be connected to the mains.



WARNING: There is risk of injury!

1. Remove the blades from the protective sleeve (see left Fig.1). Grip the blades with your thumb and index finger, so that the cutting edges point downwards. Then press the ends of the blades into the appropriate opening, until they lock into position with an audible click (see left Fig.2).

2. Connect the device to the mains and press the on/off switch (see left Fig.3).

3. Now you can begin cutting. **Always keep the electric knife still.** As the backwards and forwards motion of the knife, to which you are usually accustomed to when using an ordinary knife; now occurs automatically. Cutting occurs smoothly and effortlessly. You can use your electric knife to cut vertically or diagonally, as required.

Caution: Never attempt to cut frozen food or bones! The knife is not designed to perform these tasks. With poultry or game legs, cut until the knife touches the bone and use the tip of the blade to separate the meat.

4. When you have finished cutting, release the button and pull out the mains plug. Press the eject button and the blades can then be easily removed (see above Fig.4).

CARE & CLEANING

WARNING: BE SURE TO ALWAYS UNPLUG THE APPLIANCE BEFORE ASSEMBLING, DISASSEMBLING OR CLEANING.

- The blades are manufactured in stainless steel and are therefore easy to clean. It is best to use warm soapy water. If you wish to clean the blades individually, push the blades upwards along the guiding slot until they can be lifted over the metal pin. This procedure is reversed for assembly. Other than cleaning, the blades do not require any special maintenance.
- Regrinding is not necessary, as the blades always remain sharp due to the constant two-way friction.
- After cleaning, please keep the blades in the protective sleeve. The device itself is best cleaned with a slightly damp cloth and then dried.

NOTE: NEVER HOLD OR IMMERSE THE UNIT IN RUNNING WATER OR ANY OTHER LIQUID.

SPECIFICATIONS

Model	Brand	Description	Voltage	Frequency	Wattage
MEK120	Maxim Kitchenpro	Electric Knife 120W	220-240Vac	50/60Hz	120W

CUSTOMER SERVICE

Australian Customer Service

GAF Control (Sales) Pty Ltd

P.O Box 19

Altona North Victoria 3025

Phone: 1300 659 489

Hours: 9am-5pm (EST) Mon-Fri

www.gafcontrol.com.au

*This product may vary slightly to the product illustrated due to ongoing product development.

WARRANTY

Our goods come with guarantees that cannot be excluded under Australian Consumer Law. You are entitled to a replacement or refund for a major failure and compensation for any other foreseeable loss or damage. You are also entitled to have the goods repaired or replaced if the goods fail to be of acceptable quality and the failure does not amount to a major failure. The above applies subject to the item not being accidentally dropped by the user-or being used for purposes other than the intended use - or being tampered with. Maxim Housewares guarantees the product for 12 months from date of purchase. Refunds or replacements at retail store level are under the guidance of the stores rules/regulations. In the event of requiring assistance, the retailer from whom you purchased the product should be your first port of call.

Supplier warranting this product:

GAF Control (Sales) Pty Ltd

P.O. Box 19, Altona North

Victoria, 3025, Australia.

12 months warranty from date of purchase. 90 days warranty from date of purchase if used commercially. If your retailer has not validated your guarantee, then retain your purchase receipt. The guarantee does not cover accidental breakage or damage of your product or if it has been tampered with.

Product Model Number: MEK120

Purchase Date: _____

Retailer: _____

Retailer Store Address: _____

Name of Purchaser: _____

Address: _____

Due to the Maxim policy of continual product development; specifications, colours and details of our products may differ slightly from what is in, or depicted in this user manual or on the product and its carton.

Product: Made in China.

To view the full range of Maxim Housewares products, please go to our website.

www.gafcontrol.com.au

For additional consumer support – email us at:

gaf@gafcontrol.com.au