

INSTALLATION INSTRUCTIONS AND HOLE-CUTTING TEMPLATE

RETRACTOR EXHAUST FAN

Dear customers:

Thank you for selecting the HELLER Retractor Exhaust Fan
Please read all instructions before commencing installation.

IMPORTANT: The HELLER Retractor Exhaust Fan must be installed to comply with the appropriate council regulations and the Australian and New Zealand wiring rules AS/NZS3000:2000 or latest edition thereof.

The interconnecting cables required for installation of this appliance are not included, suitable cabling no lighter than ordinary duty cable rated at a minimum 10Amp load rating is to be used when installing/wiring this appliance.

WARNING

1. Use this unit only as described in this manual. Any other use not recommended by the manufacturer may cause fire, electric shock, or injury to persons. If you have questions, contact the manufacturer or local agent.
2. All wiring must be carried out by a licensed Electrician in accordance with all applicable National/local codes and standards. Also check with the local council regulations regarding installation of exhaust fans.
3. Make sure the power is off before the installation.
4. When cutting into the wall. Do not damage electrical wiring and other hidden utilities.
5. The unit must be properly grounded.
6. For the purpose of avoiding any dangerous gas leaking into your bathroom, the ventiduct of the unit must not be laid together with the ventiduct of air-fueled water heater or other open-fire appliances into the same flue.
7. The unit must be isolated from the power by means of a plug or all-pole disconnection switch with a contact separation of at least 3mm in each pole.
8. The power cable must stand a minimum 10A load.
9. This appliance is not intended for use by persons (including children) with reduced physical, sensory or mental capabilities, or lack of experience and knowledge, unless they have been given supervision or instruction concerning use of the appliance by a person responsible for their safety.
Children should be supervised to ensure that they do not play with the appliance.

IMPORTANT CONSIDERATIONS BEFORE INSTALLING

A few minutes planning can make a big difference to the installation time and also to your satisfaction with the function of the unit.

1. Generally the unit should be mounted outside the shower cubicle.
2. For the exhaust fan to work efficiently. Replacement air of a volume equivalent to what is being extracted must be able to enter the room. In general this air would be drawn under the door, or through a slightly open window. If the room is airtight, the fan will function poorly.
3. This product is designed for installation in flat ceiling only. Do not mount it on a sloping ceiling or a vertical wall.
4. Before commencing any cutting, check in the ceiling space that there are no obstructions such as ceiling joists and that there is sufficient tight clearance for the housing, check the electrical wiring can be routed from the wall switches to the mounting location.

INSTALLATION

1. Cutting a vent(when required)

1)For installation where external venting is required or is your choice, locate suitable location in either the roof or exterior wall to vent out the exhaust fan air/steam and cut out a 158mm Hole.

2)Ducting

Put one end of a 150mm diameter ventiduct(not supplied) into the vent hold and seal space around the hole using a suitable sealant and coving where necessary.(Figure 1)

3)Locating

For the fan to work efficiently, from the fascia there should be about a 2m overall height to ground.

4) Prepare the ceiling

Using this instruction card as a template, mark the ceiling with a pencil outline and cut out a hole in the ceiling at the chosen area.

Make sure a distance between the edges and wall no less than 250mm.

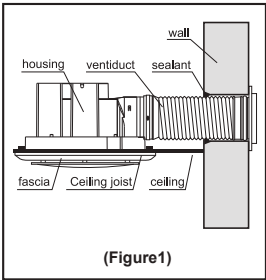
Also from the rooftop there should be a minimum 250mm height to the ceiling.(Figure 2) Ensure that the intended hole will have suitable room to locate the unit and will not foul on joists or not fit in the headroom provided.

5)Remove the fascia

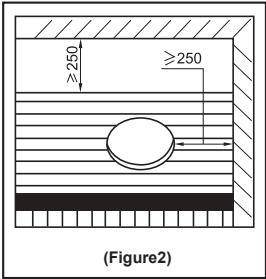
Pull the fascia a little, press the fastening springs backside, and unfasten the DC plug and the connector pin of retractor (remove the small cover first), then remove the fascia.

6)Wiring(Ensure the power is turned off)

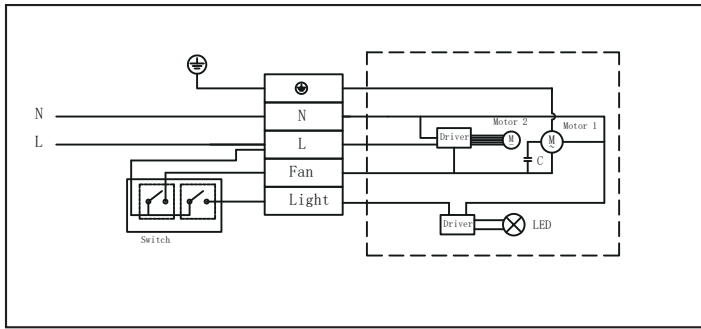
Wiring the unit as the wiring diagram.(Figure 3)



(Figure1)



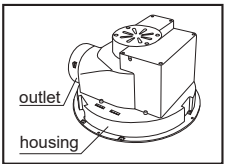
(Figure2)



(Figure 3)

7)Position the housing into the hole

Choose an optimal direction to put the housing into the hole in accordance with the position of fan outlet. Remove the outlet from the body and fit it to the in-house end of the duct(Figure 4), then put back the outlet to body of the unit into the hole in the ceiling, please note that the outlet and body to be well fixed.



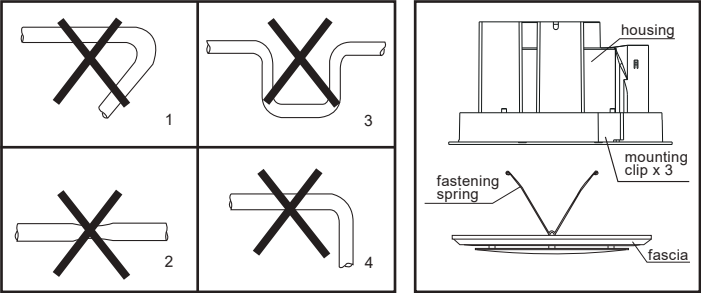
(Figure 4)

Read and save these instructions!

Please take this card as hole cutting template $\Phi 295\text{mm}$.

INSTALLATION INSTRUCTIONS AND HOLE-CUTTING TEMPLATE

Note: Try to keep the redundant wire away from the housing.
Note: The shortest, smooth surface ventiduct with the lease elbows will provide optimum fan performance. Please keep the ventiduct as straight as possible.(Figure 5)
Note: Assure the 3 mounting clips are close to the body so that the unit can be easily pushed into the hole in the ceiling.
Note: Advice make an inspecting hole to be for installation and inspection convenient.

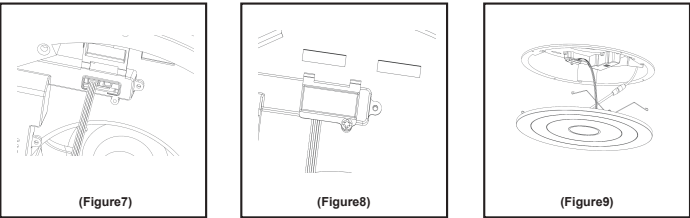


(Figure 5)

(Figure 6)

Note: It is highly recommended that interconnected wire be laid into the wall beforehand for the purpose of keeping an integrated look in the bathroom.

- 8) Fasten the unit on the ceiling
Use a screw driver and screw clockwise so that the mounting clip move close to the ceiling surface to secure the fan. (Figure 6)
- 9)Replace the fascia
Attach the DC plug and connector pin of retractor, then fix the small cover with screws.
Put the two springs on the fascia into the two slots in the unit. (Figure 7-9)



(Figure7)

(Figure8)

(Figure9)

USE

- 1)Turn on/off the switch button to make the unit run or stop.
2)Running the fan can exhaust odors and steam in a quick and efficient way.
Note: Shut off power urgently when any abnormalities occur in operation, then call your local licensed electrician for inspection necessary service work.
Note: It is absolutely prohibited to insert finger or thin bar to the fascia for avoiding being injured or damaging the unit.
Note: The unit must not be installed at a place that suffers from severe water leakage.

MAINTENANCE

- 1)Shut off power before cleaning or maintenance.
2)Wipe fascia with care using a soft cloth soaked with water or neutral detergent. Ensure the motor or other electrical parts can not touch the water.
3)Replaced the fascia after it is dry thoroughly.

WARRANTY

The Heller Retractor Exhaust Fan is warranted against defects in manufacturing and workmanship for a period of 1 years. The warranty does not extend to installation of the unit or any associated wiring or any damage caused installation or wiring.
The installation must be conducted by a licensed electrician and a suitable certificate of safety is to be issued by the electrician who installed the unit. Warranty claims will be voided unless a certificate of safety can be produced when required, prior to service or repair. Please keep and present the original invoice to your service agent for warranty services.

This warranty does not cover damage or loss caused by:
1)Any consequential losses arising from incorrect installation or operation or maintenance of this product.
2)Any consequential losses arising from incorrect wiring of this product.
3)Any modifications or changes make to the unit, other than those recommended by the manufacturer.

MAIN TECHNICAL PARAMETERS

Input	Total Power	LED Light	Air Volume	Hole-cutting Size	Model No
220V/240V 50Hz	50W	8W	300m³/h	Φ295mm	RF250L

LIST OF COMPONENTS SUPPLIED

Main body with fascia	1 piece each
Installation instruction and cutout template	1 piece
Switch	1 set
Warranty card	1 piece

Fill out the following details and file along with your purchase receipt and certificate of safety.

RETRACTOR EXHAUST FAN

Model No: _____

Purchased from: _____

Date of purchase: _____

Read and save these instructions!

Please take this card as hole cutting template Φ295mm.